



Fast  
renovation

**R-Tile**

**Gerflor®**

# R-Tile

designed for durability and fast installation



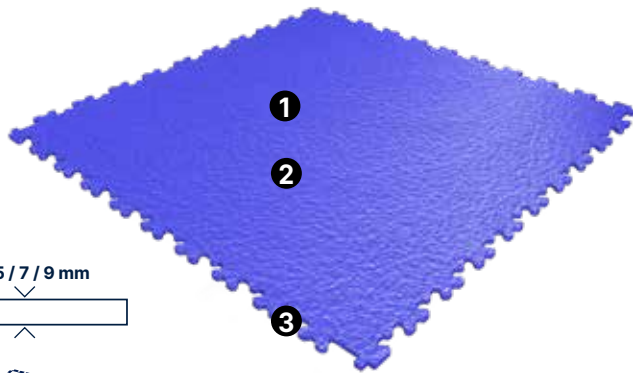
- Performance**
- Withstand Mechanical traffic
  - 10 colors available in 5 mm, 7 mm, 9 mm: for versatile applications



- Easy Installation**
- Adhesive Free Interlocking system: Easy to remove and reuse
  - Minimal subfloor preparation: easy to install

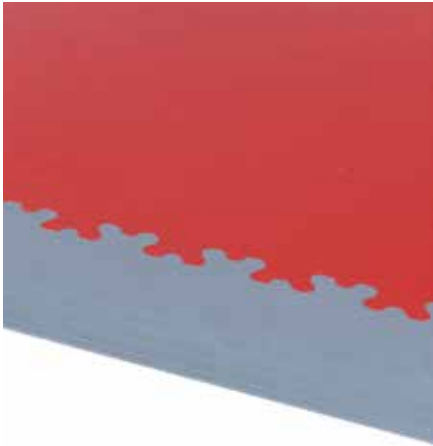


- Safety & Well being**
- R10 Slip resistance
  - Walking comfort



1. Textured emboss: anti slip properties
2. Made from hardwearing material available in various thickness
3. Dovetail interlocking system

## Do not forget the finishes!



**Access & corner**  
All colours for all thicknesses are available



**Anti Bounce Mallet**  
5951



**Entrance mat**  
1700 - Esplanade 9000

# Renovation solution

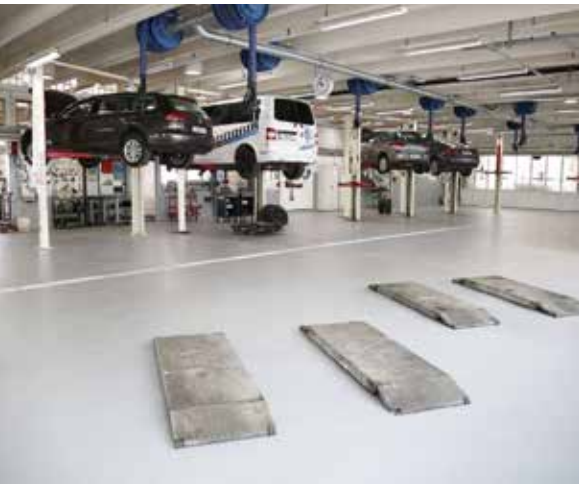
across various commercial & industrial applications



**R-Tile 5 mm:** light commercial



**R-Tile 7 mm:** factory and warehouse



**R-Tile 9 mm:** industrial applications

## we care / we act



- Recycling**  
100% recyclable  
Up to 80% recycled content



- Indoor Air Quality**  
TVOC < 100 micrograms / m³  
No Formaldehyde



- Reach**  
100% REACH compliant  
Phthalate Free (except recycled content)  
FREE of heavy metals  
FREE of solvent

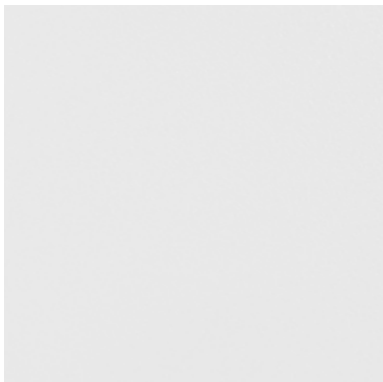




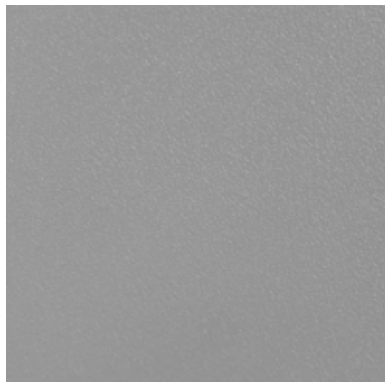
# R-Tile colours



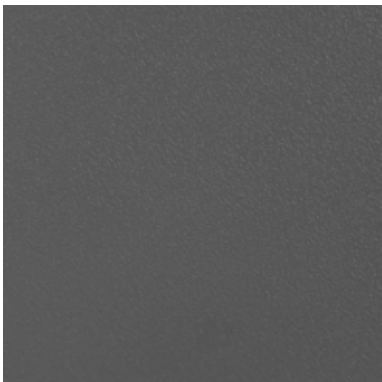
503 × 503 mm



9003 White



7045 Light Grey



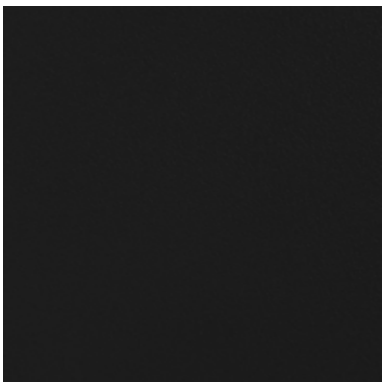
7015 Dark Grey



3016 Maroon



5005 Blue



9004 Black



3020 Red



1002 Beige



1018 Yellow



6005 Green



9003 White



9003 White / 7045 Light Grey




5005 Blue




7045 Light Grey / 9004 Black / 1018 Yellow



7015 Dark Grey

R-Tile					
Description					
Total Thickness	EN ISO 24346	mm	5	7	9
Thickness of the wearlayer	EN ISO 24340	mm	-		
Weight	EN ISO 23997	g/m <sup>2</sup>	7000	9200	12800
Size	EN ISO 24342	mm	503 × 503		
Number of planks per box / sqm per box	-	-	10 / 2.53 sqm	8 / 2.02 sqm	6 / 1.52 sqm
Classification					
Norm/Product Specification	-	-	EN ISO 10581		
European Classification	EN ISO 10874	Class	34-43		
Fire Rating	EN 13501-1	Class	Bfl-s1		
Static Electrical Propensity	EN 1815	kV	< 2		
Slip Resistance Wet	EN 16165 app.B (DIN 51 130)	Class	R10		
Performances					
Wear Resistance	EN 660.2	mm <sup>3</sup>	≤ 2.0		
Type Binder content	ISO 10581	group	I		
Curling	EN ISO 23999	mm	≤ 1		
Dimensional stability (norm)	EN ISO 23999	%	≤ 0.25		
Residual Indentation	EN ISO 24343-1	mm	≤ 0.10		
Castor chair test	ISO 4918	-	OK		
Flexibility	ISO 24344 method A	-	No cracking		
Shore hardness	EN ISO 868	H <sub>D</sub>	≥ 40		
Thermal Conductivity	EN ISO 10456	W/(m.k)	0.25		
Colour Fastness	EN ISO 105-B02	degree	≥ 6		
Chemical Products Resistance	EN ISO 26987	-	OK		
Environment/Indoor Air Quality					
TVOC after 28 days	ISO 16000-6	micrograms/m <sup>3</sup>	<100		
CE Marking					
CE		EN 14041			



The information contained in this document is valid from 01/07/2024 and is subject to change at any time without notice.

In the context of constantly changing technology, our customers are responsible, prior to any use, for checking with us that this document is the version in force. Rubber leaves indelible stains on vinyl floorings: do not use mats with rubber backing and replace tubular furniture feet with those made of PVC or polyamide. Place mats of sufficient length at entrances to reduce outside sources of dirt.

we care / we act

Our Commitments for a Sustainable future



CARBON FOOTPRINT\*  
-20 % kg CO<sub>2</sub> equivalent/m² between 2020 and 2025



BIOSOURCED CONTENT\*\*  
10 % by 2025



RECYCLED CONTENT  
30 % by 2025



ADHESIVE FREE\*\*\*  
35 % by 2025



ANNUAL VOLUME RECYCLED  
60 000 t by 2025



\* Scopes 1 and 2 defined in the GHG protocol \*\* % of activity with biosourced materials \*\*\* % of activity - adhesive free solution